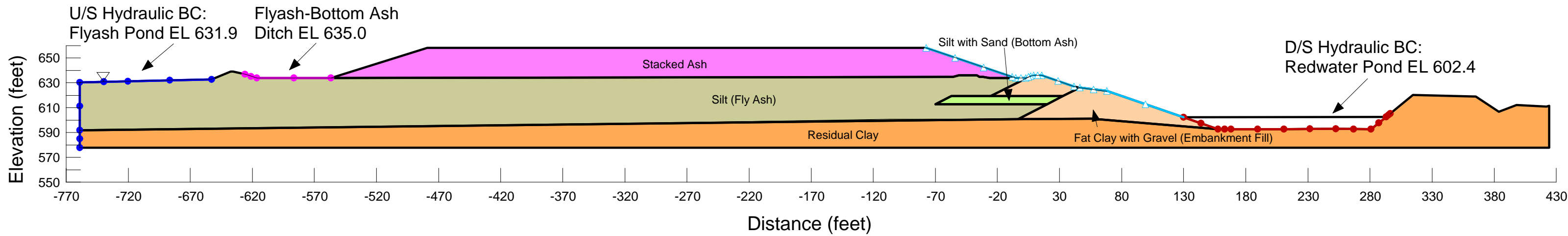
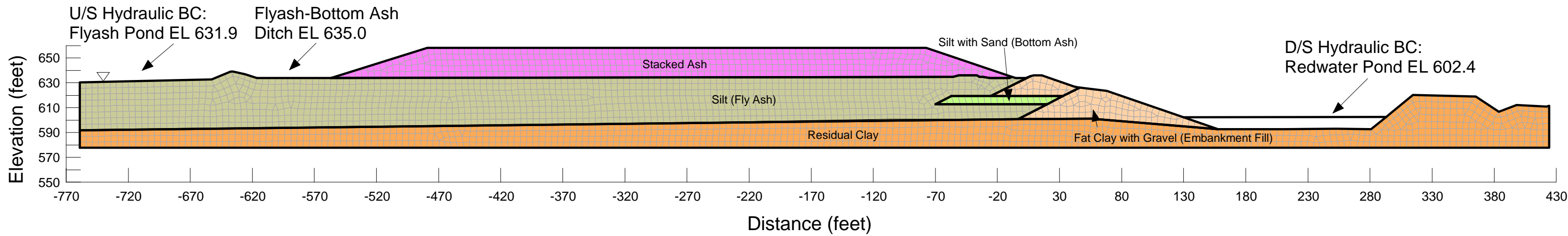


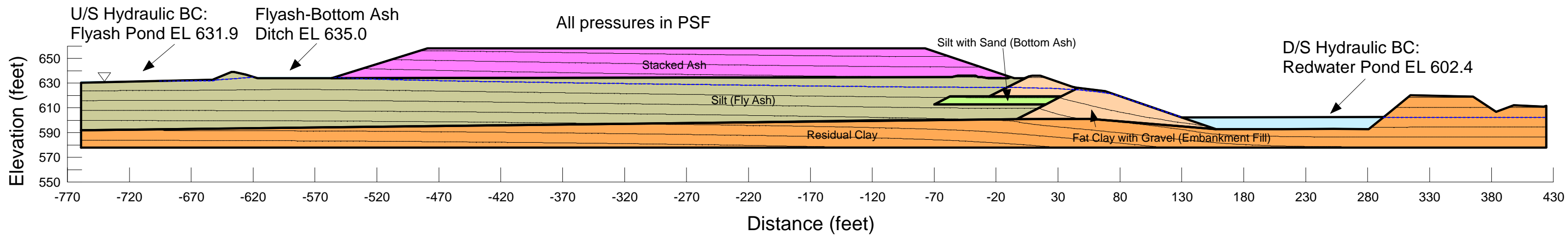
Widows Creek Main Ash Pond Section L - Five Year Buildout Subsurface Profile and Boundary Conditions



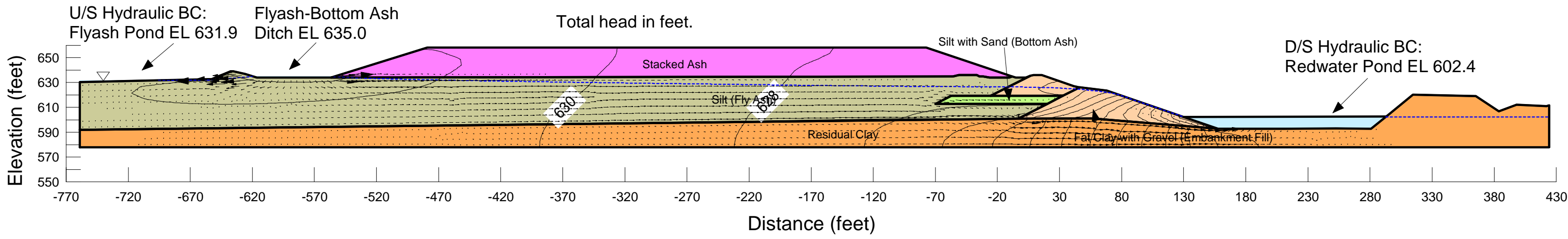
Widows Creek Main Ash Pond Section L - Five Year Buildout Finite Element Mesh



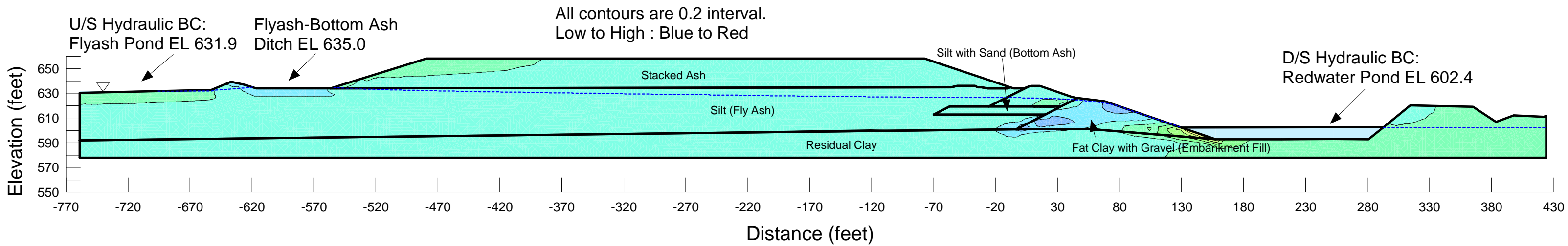
Widows Creek Main Ash Pond Section L - Five Year Buildout Pore Water Pressure Contours



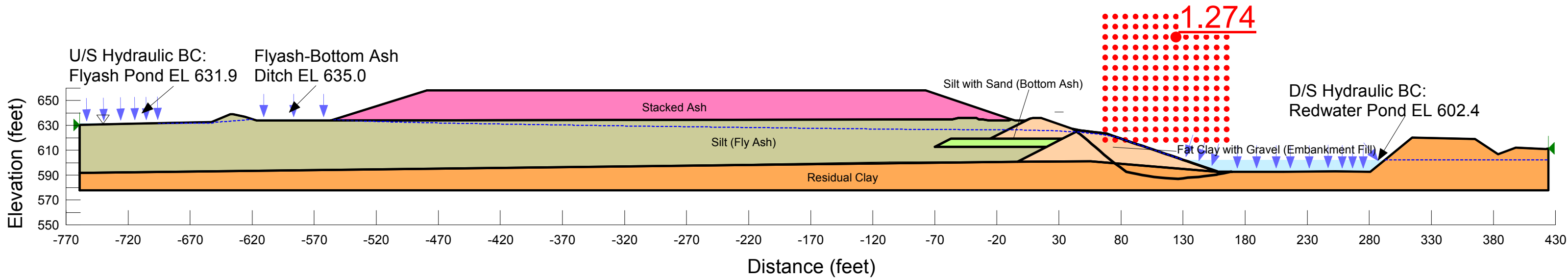
Widows Creek Main Ash Pond Section L - Five Year Buildout Total Head Contours and Flow Vectors



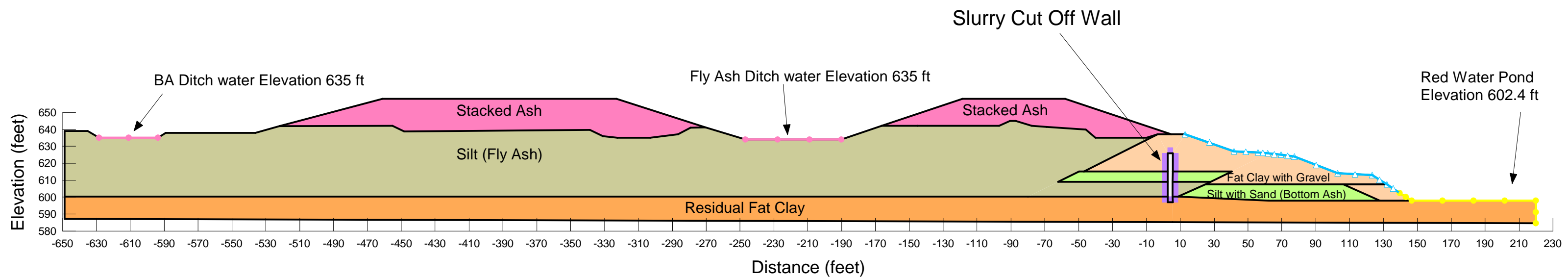
Widows Creek Main Ash Pond Section L - Five Year Buildout Vertical Gradient Contours



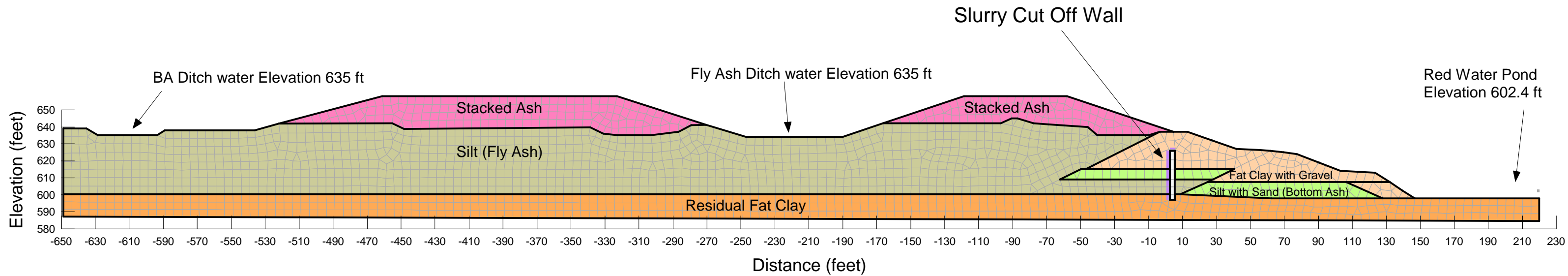
Widows Creek Ash Pond Section L - Main Ash Pond Five Year Buildout - Slope Stability



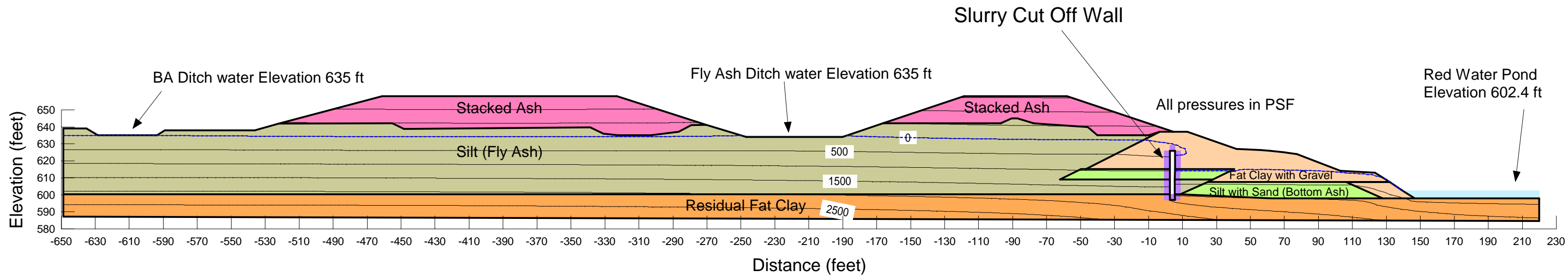
Widows Creek Ash Pond Section M - Bottom Ash Stack Five Year Buildout Subsurface Profile and Boundary Conditons



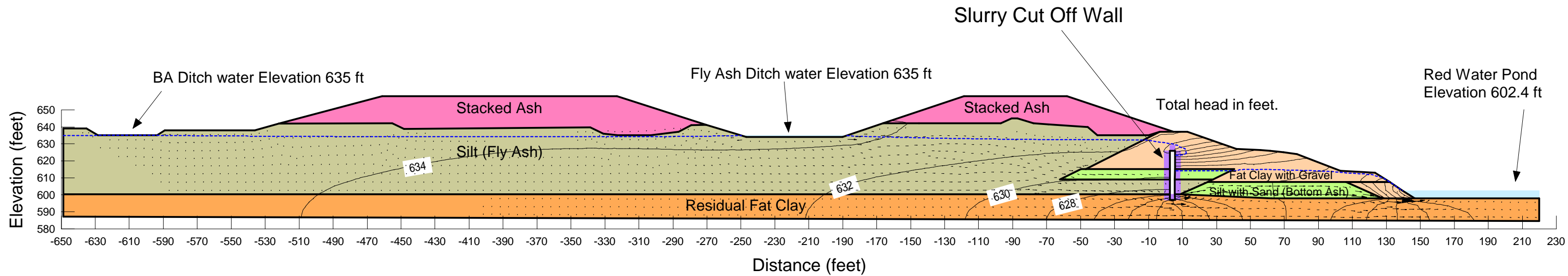
Widows Creek Ash Pond Section M - Bottom Ash Stack Five Year Buildout Finite Element Mesh



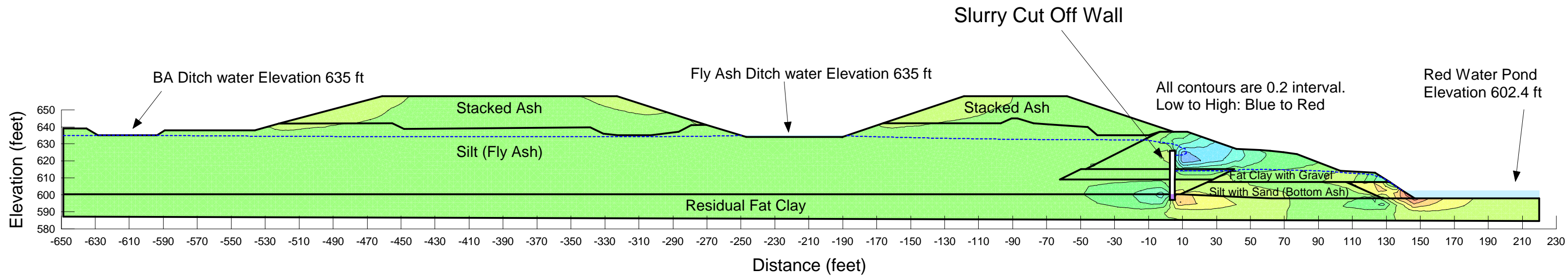
Widows Creek Ash Pond Section M - Bottom Ash Stack Five Year Buildout Pore Water Pressure Contours



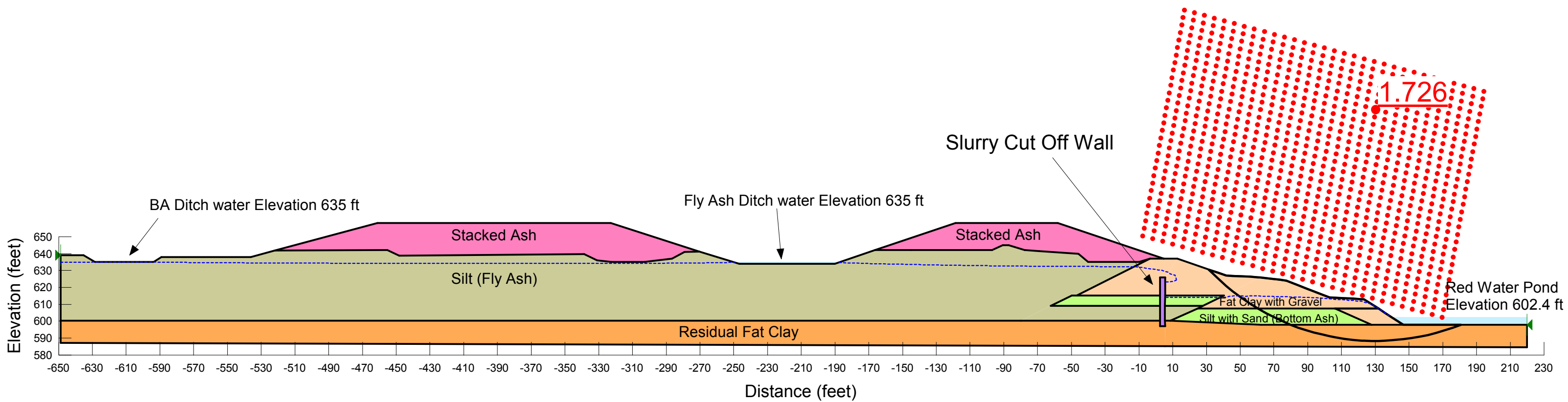
Widows Creek Ash Pond Section M - Bottom Ash Stack Five Year Buildout Total Head Contours and Flow Vectors



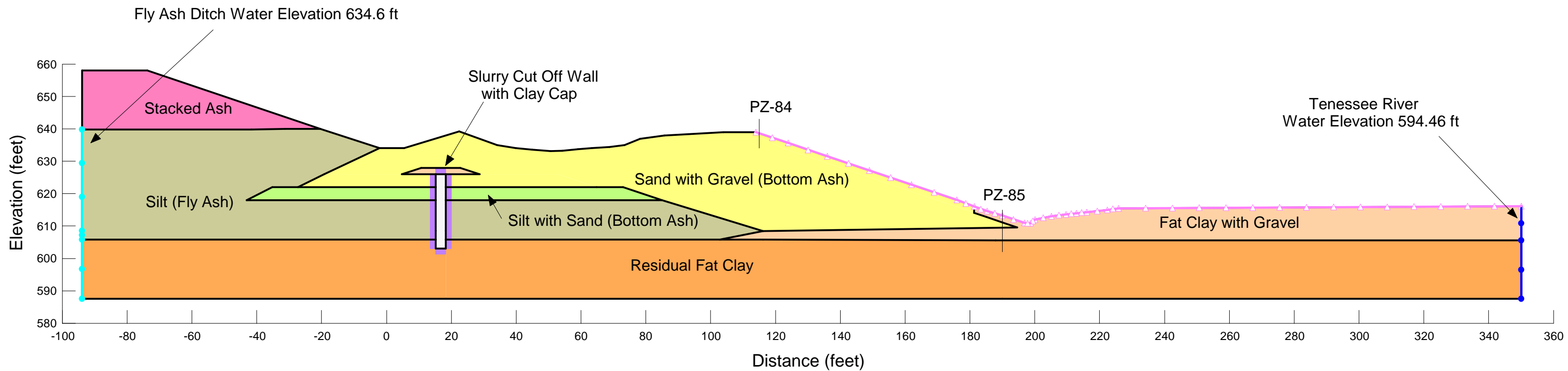
Widows Creek Ash Pond Section M - Bottom Ash Stack Five Year Buildout Vertical Gradient Contours



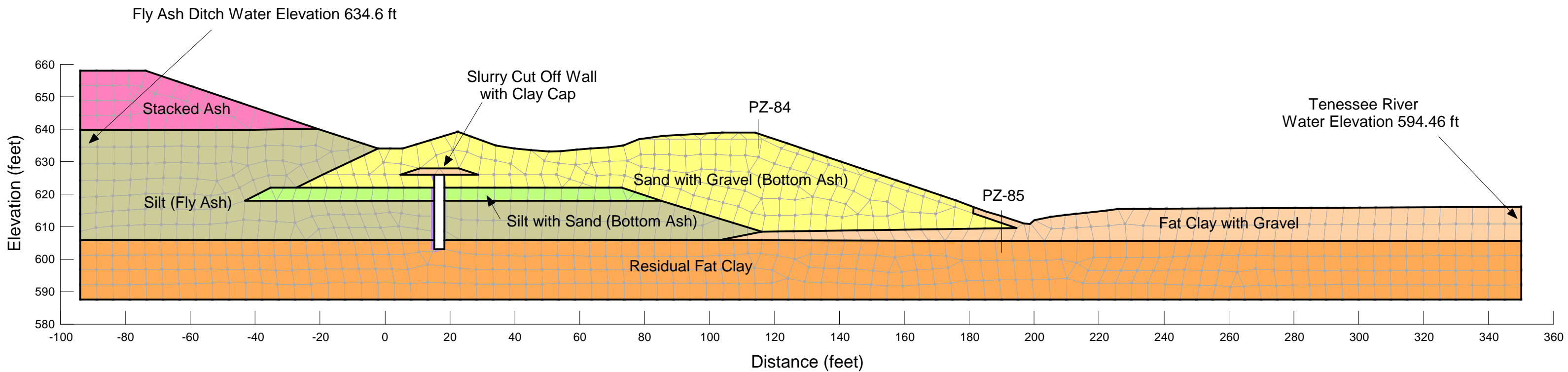
Widows Creek Ash Pond Section M - Bottom Ash Stack Five Year Buildout - Slope Stability



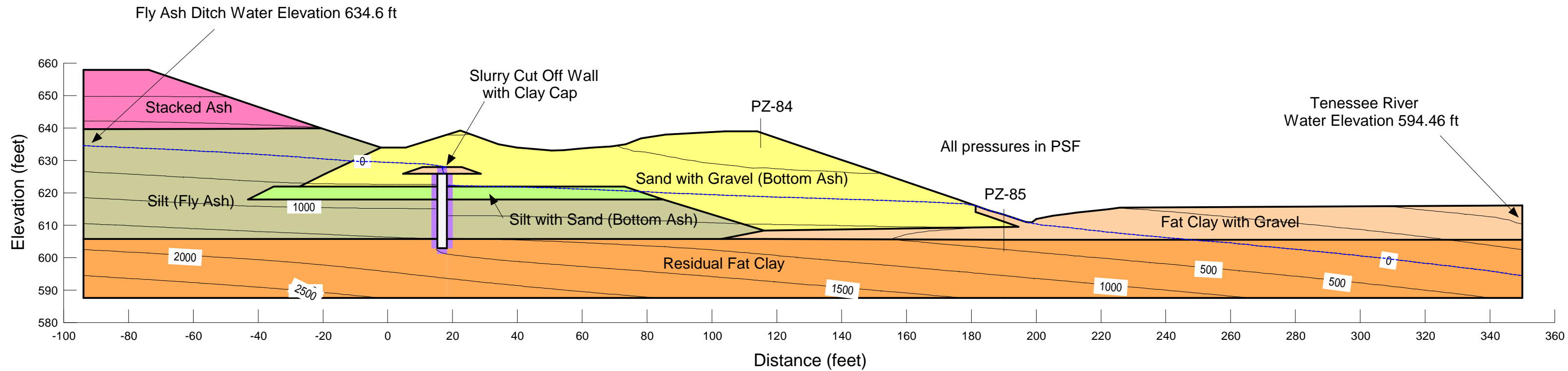
Widows Creek Ash Pond Section O - Bottom Ash Stack 5 Year Build Out Subsurface Profile and Boundary Conditions



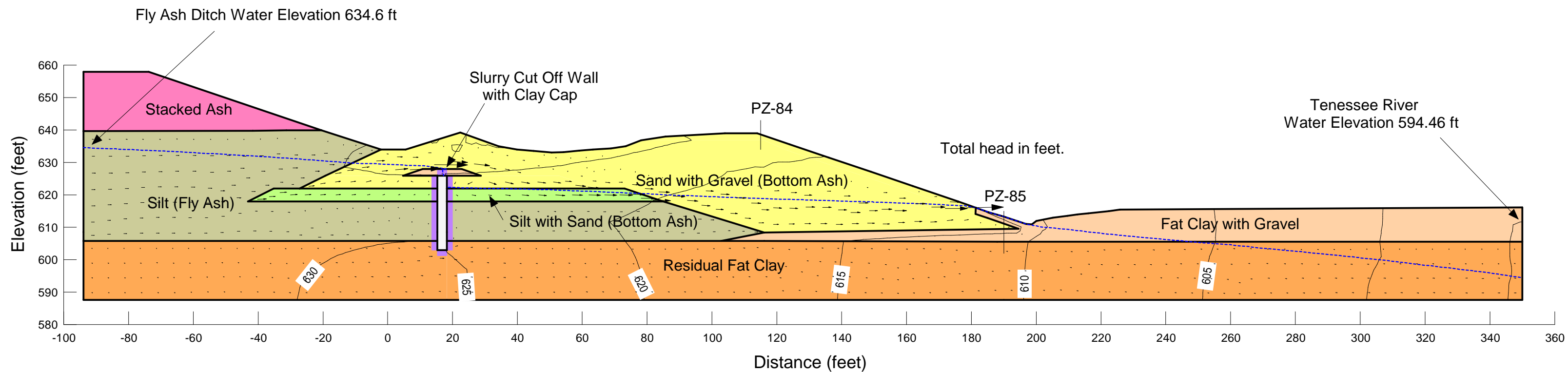
Widows Creek Ash Pond Section O - Bottom Ash Stack 5 Year Build Out Finite Element Mesh



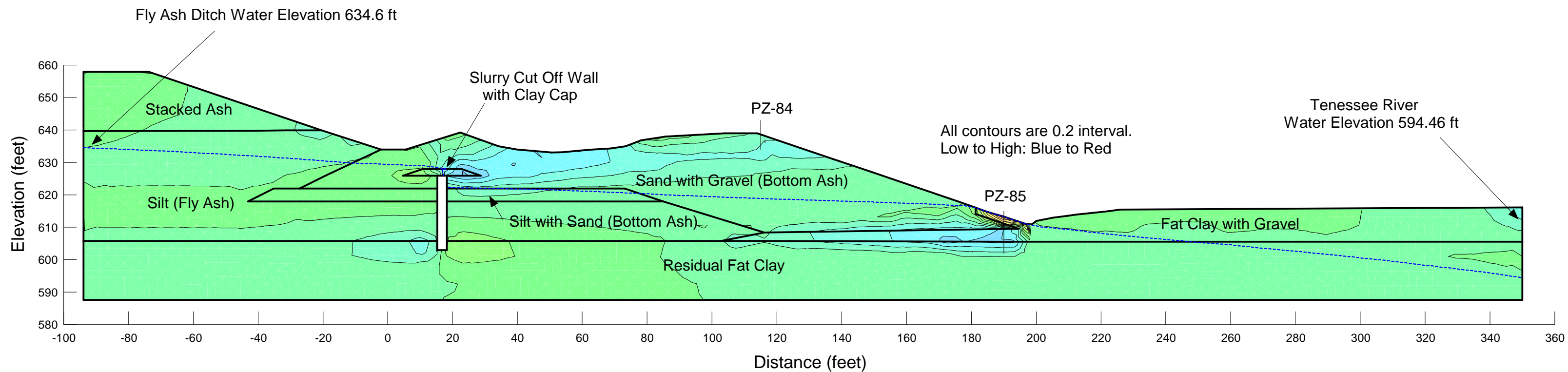
Widows Creek Ash Pond Section O - Bottom Ash Stack 5 Year Build Out Pore Water Pressure Contours



Widows Creek Ash Pond Section O - Bottom Ash Stack 5 Year Build Out Total Head Contours and Flow Vectors



Widows Creek Ash Pond Section O - Bottom Ash Stack 5 Year Build Out Vertical Gradient Contours



Widows Creek Ash Pond Section O - Bottom Ash Stack Five Year Buildout - Slope Stability

